

**COPPER STATE RUBBER
VISUAL INSPECTION / HYDROSTATIC TEST REPORT
SUPER CHOKE & KILL / CEMENTING
15,000 P.S.I. W/P X 22,500 P.S.I. T/P
SPEC: 090-19225 HS
H2S SUITABLE**

SHOP ORDER NO.: 18157 SIZE: 3" I.D.

SERIAL NO.: 23417 LENGTH 50 FT. IN.

CONNECTIONS: 3-1/16" 15,000 PSI NO. 6 HUB EACH END

HT-F9779

VISUAL INSPECTION

(A) END CAPS / SLEEVE RECESS: OK
(B) EXTERIOR / COVER / BRANDING: OK
(C) INTERIOR TUBE: OK

HYDROSTATIC TEST

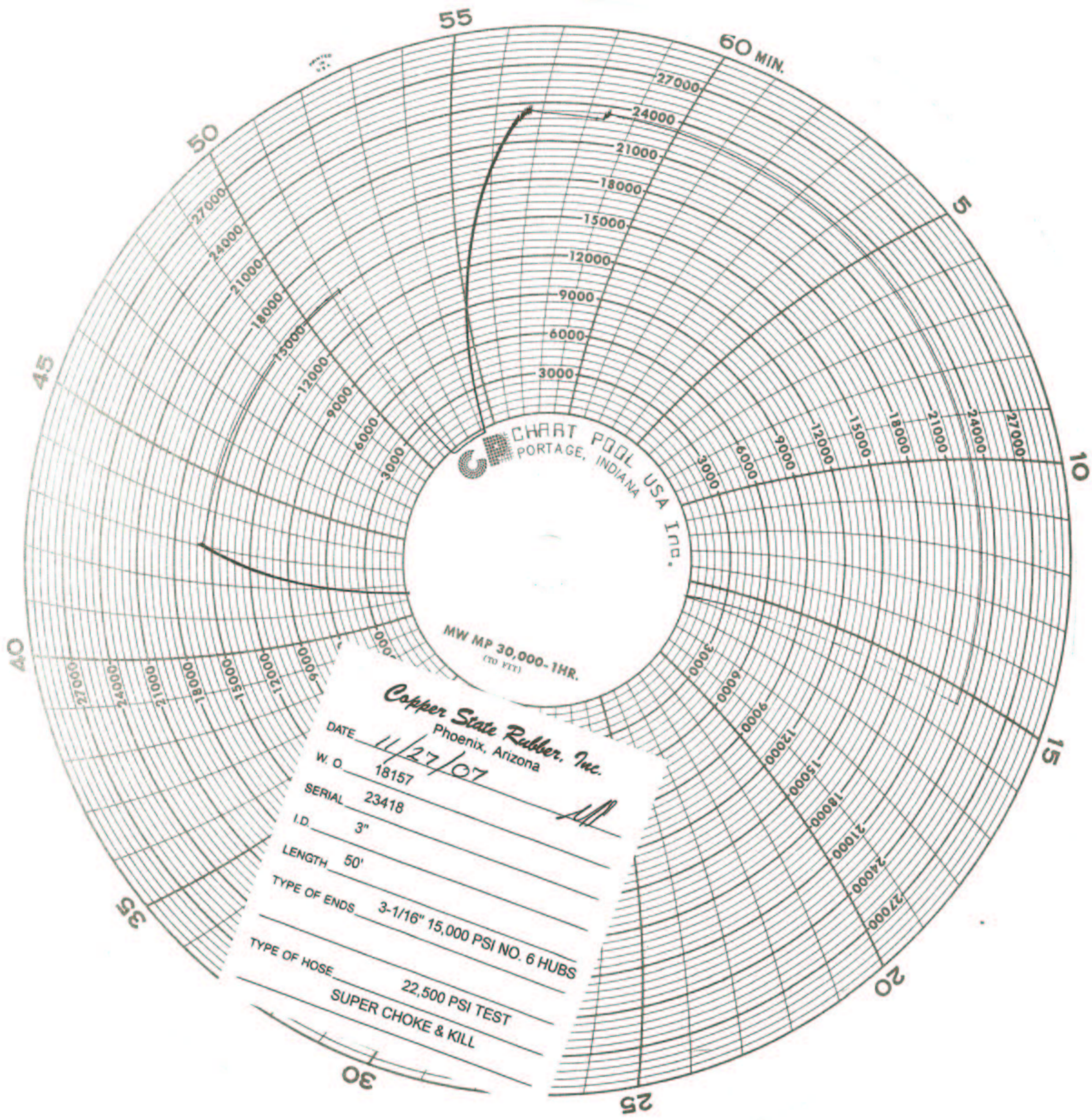
5 MIN. @ 15,000 PSI


2 MIN. @ 0 PSI 50' OAL

15 MIN. @ 22,500 PSI

WITNESSED BY: 

DATE November 27, 2007




CHART POOL USA Inc.
 PORTAGE, INDIANA
 MW MP 30,000-1HR.
(70 FT)

Copper State Rubber, Inc.
 Phoenix, Arizona

DATE 11/27/07
 W. O. 18157
 SERIAL 23418
 I.D. 3"
 LENGTH 50'
 TYPE OF ENDS 3-1/16" 15,000 PSI NO. 6 HUBS
 TYPE OF HOSE 22,500 PSI TEST
SUPER CHOKE & KILL

COPPER STATE RUBBER
VISUAL INSPECTION / HYDROSTATIC TEST REPORT
SUPER CHOKE & KILL / CEMENTING
15,000 P.S.I. W/P X 22,500 P.S.I. T/P
SPEC: 090-19225 HS
H2S SUITABLE

SHOP ORDER NO.: 18157 SIZE: 3" I.D.
SERIAL NO.: 23418 LENGTH 50 FT. IN.

CONNECTIONS: 3-1/16" 15,000 PSI NO. 6 HUB EACH END
HT-F9779

VISUAL INSPECTION

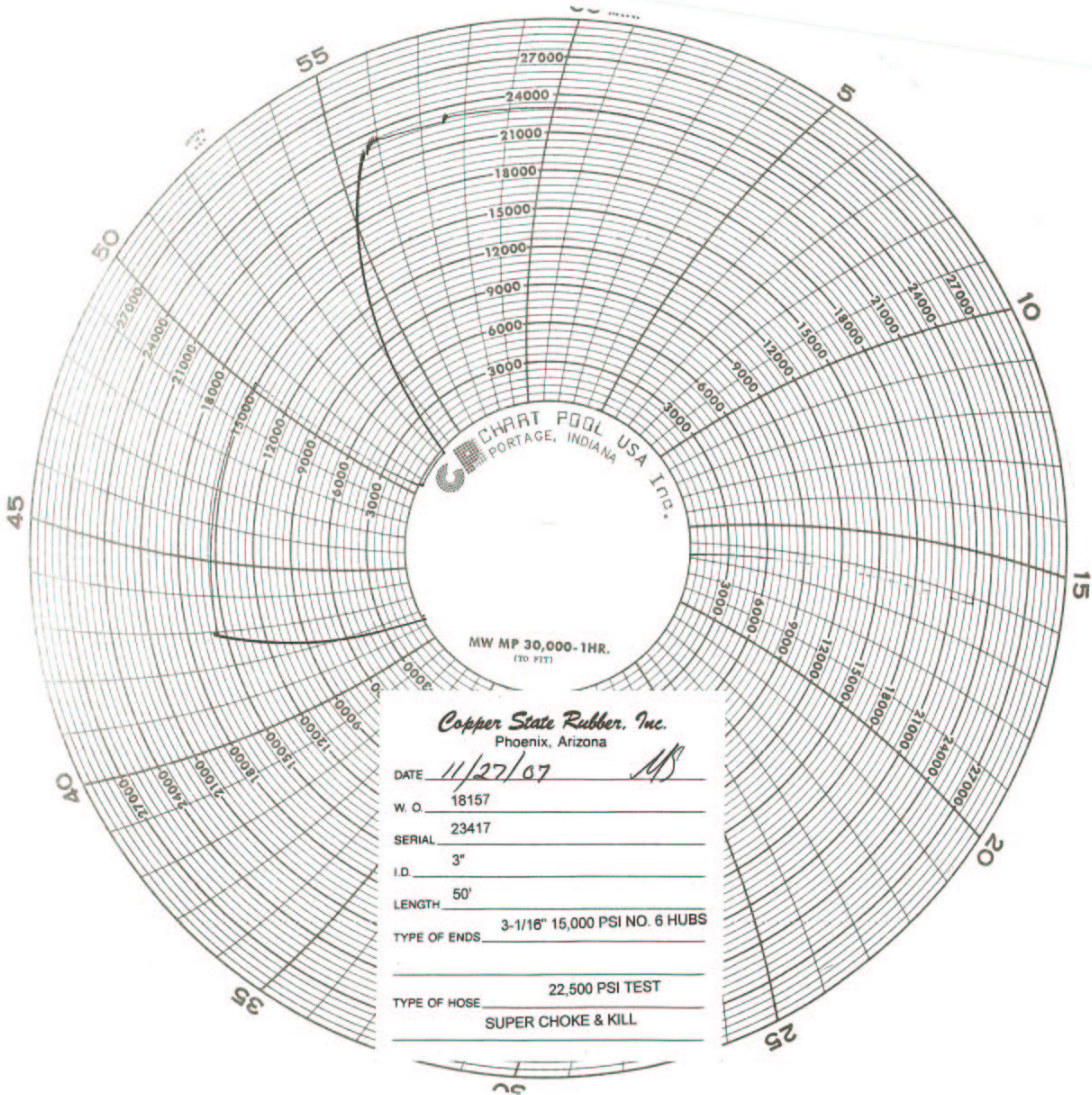
(A) END CAPS / SLEEVE RECESS: OK
(B) EXTERIOR / COVER / BRANDING: OK
(C) INTERIOR TUBE: OK

HYDROSTATIC TEST

5 MIN. @ 15,000 PSI
2 MIN. @ 0 PSI 50' - 1" OAL
15 MIN. @ 22,500 PSI

WITNESSED BY: 

DATE November 27, 2007



Copper State Rubber, Inc.
Phoenix, Arizona

DATE 11/27/07 *MS*

W. O. 18157

SERIAL 23417

I.D. 3"

LENGTH 50'

TYPE OF ENDS 3-1/16" 15,000 PSI NO. 6 HUBS

TYPE OF HOSE 22,500 PSI TEST
SUPER CHOKE & KILL